

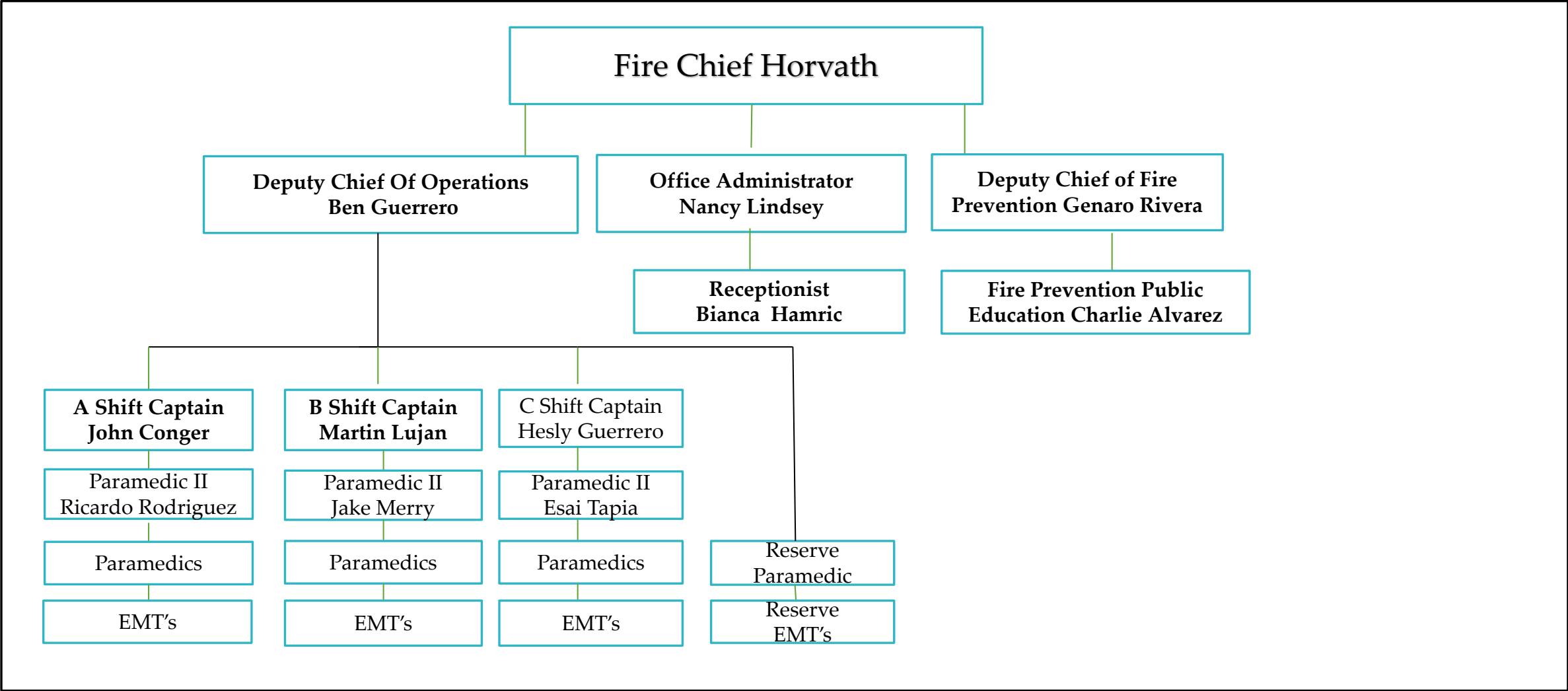


Tubac Fire District

SHIFTS, ORGANIZATION, AND DEPLOYMENT

BY DEPUTY CHIEF BEN GUERRERO

Chain of Command



Emergency Medical Service provider Certifications

- EMT – Basic Life Support 244-hour training program that consists of classroom and practical training. EMT basics can administer some medications to include Oxygen, Aspirin, Nitroglycerin, Albuterol, Epi, Atrovent, Glucose, and Narcan
- Paramedics – Advanced Life support 1000-hour training program that consists of classroom and practical training. Paramedics are allowed to perform advanced procedures such as needle decompressions, intubations, cric's, and advanced cardiac procedures to include cardiac pacing, cardioversions, and interpret 12 lead EKG's. Paramedics can administer over 40 medications



Structure Firefighter Certifications

- Firefighter I & II is a 300-hour training program with state certification once completed.
- Driver Operator
- Fire Instructor
- Fire Inspector
- Fire and life safety educator
- Fire Investigator

Wildland Firefighter certifications

- Firefighter II is the basic wildland firefighter (entry level)
- Firefighter I is the advanced wildland firefighter. Has a minimum of two seasons of active firefighting experience. (Squad Boss)
- Engine Boss is the engine captain for wildland fire deployments. The engine boss is responsible for the crew to include securing mobilization paperwork, Checking into incidents, receiving assignment instructions, crew time reports, and demobilization



Special Operations Certifications

- Hazardous materials Technician
- Rope Rescue I, II, & III
- Swift water rescue
- Confined space

Daily Staffing Station 1

Chief Horvath

Deputy Chief Rivera

Nancy Lindsey

Bianca Hamric

Daily Staffing – Firefighter/Paramedic & Firefighter/EMT (PAR2) Station 1 can house 2 firefighters for 24 hours.

- Medic 731
- Engine 721
- Brush 721
- Tender 721
- Air and Light unit (Portable Air Compressor for SCBA bottles)

Daily Staffing Station 2.

- Station two can house 2 Firefighters for 24 hours
- Deputy Chief Guerrero
- Daily Staffing – Firefighter/Paramedic & Firefighter/EMT (PAR2)
 - Medic 732
 - Engine 722
 - Brush 722
 - Hazmat truck and trailer

Daily Staffing Station

3. Station 3 is at capacity with flight crew

- Daily Staffing Firefighter/Paramedic & Firefighter/EMT
 - This station has a minimum staffing of 1 Firefighter/Paramedic
 - Medic 733
 - Engine 723
 - Brush 723
 - Polaris UTV X2
 - Lifenet 6
 - Pilot
 - Flight Nurse
 - Flight Medic
 - A star helicopter



Station 4 Daily Staffing

- Daily Staffing – Captain/Paramedic & Firefighter/ EMT
- Station 4 Can house 5 firefighters for 24 hours.
 - Medic 734
 - Engine 724
 - Brush 724
 - Tender 724

Additional Staffing information

All Employees are minimum Structure firefighter I & II, Basic Wildland firefighter, and EMT.

Most of our staff are Paramedics and Hazmat Techs. We are working on getting everyone Rope Rescue and Driver Operator Certified.

Captain Requirements – Paramedic, Hazmat Tech, Fire Instructor, Fire Inspector, Driver operator, and Leadership training.

A shift

4 Medics

4 EMT's

4 Hazmat Techs

6 Driver Operators

3 Engine Bosses

B Shift

5 Medics

2 EMT's

3 Hazmat Techs

4 Driver Operators

C Shift

5 Medics

3 EMT's

5 Hazmat Techs

6 Driver Operators

2 Engine Bosses

Resource Deployment Station 1

RESPONSE PER CALL TYPE

- Medical Call Station 1
 - Medic 731
 - Medic 732
- Structure Fire Station 1
 - Engine 721
 - Engine 722
 - Tender 724
 - Medic 734
 - Deputy Chief (Mutual Aid)
- Brush Fire
 - Brush 721
 - Engine 722
 - Additional units based on severity

RESPONSE PER CALL TYPE

- Motor Vehicle Station 1
 - Medic 731
 - Medic 732
 - Engine 724 (Has extra vehicle extrication equipment)
 - Deputy Chief on major accidents
- Major Medical call (Cardiac arrest, stroke, heart attack)
 - Medic 731
 - Medic 732
 - Medic 734
 - Deputy Chief

Resource Deployment Station 2

RESPONSE PER CALL TYPE

- Medical Call Station 2
 - Medic 732
 - Medic 734
- Structure Fire Station 2
 - Engine 722
 - Engine 724
 - Tender 724
 - Medic 733
- Brush Fire Station 2
 - Brush 722
 - Engine 724
 - Additional as needed

RESPONSE PER CALL TYPE

- Motor Vehicle Station 2
 - Medic 732
 - Engine 724
 - Medic 733
 - Deputy Chief
- Major Medical call (Cardiac arrest, stroke, heart attack)
 - Medic 732
 - Medic 734
 - Medic 733
 - Deputy Chief

Resource Deployment Station 3

RESPONSE PER CALL TYPE

- Medical Call Station 3
 - Medic 733
 - Medic 734
- Structure Fire Station 3
 - Engine 723
 - Engine 724
 - Tender 724
 - Medic 732
 - Deputy Chief
- Brush Fire Station 3
 - Brush 723
 - Engine 724
 - More resources as needed

RESPONSE PER CALL TYPE

- Motor Vehicle Station 3
 - Medic 733
 - Engine 724
 - Medic 732
 - Deputy Chief
- Major Medical call (Cardiac arrest, stroke, heart attack)
 - Medic 733
 - Medic 734
 - Medic 732
 - Deputy Chief

Resource Deployment Station 4

RESPONSE PER CALL TYPE

- Medical Call Station 4
 - Medic 734
 - Medic 732
- Structure Fire Station 4
 - Engine 724
 - Engine 723
 - Medic 732
 - Deputy Chief
- Brush Fire Station 4
 - Brush 724
 - Engine 722 Or Engine 723
 - More resources as needed

RESPONSE PER CALL TYPE

- Motor Vehicle Station 4
 - Medic 734
 - Engine 722
 - Medic 733
 - Deputy Chief
- Major Medical call (Cardiac arrest, stroke, heart attack)
 - Medic 734
 - Medic 732
 - Medic 733
 - Deputy Chief