



Tubac Fire Board Meeting

January, 2022

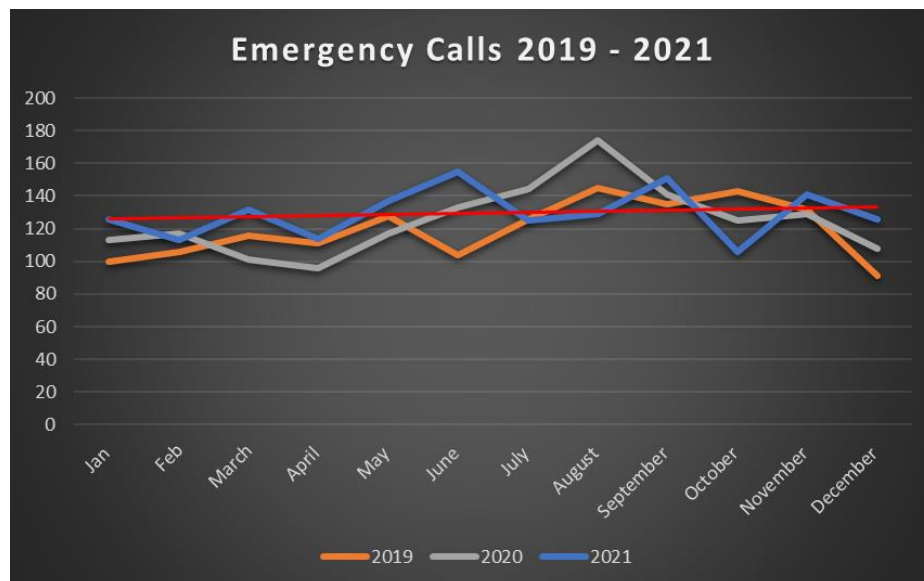
Staff Report

Tubac Fire District is committed to the safety of our community through the delivery of fire suppression, medical services, and public education.

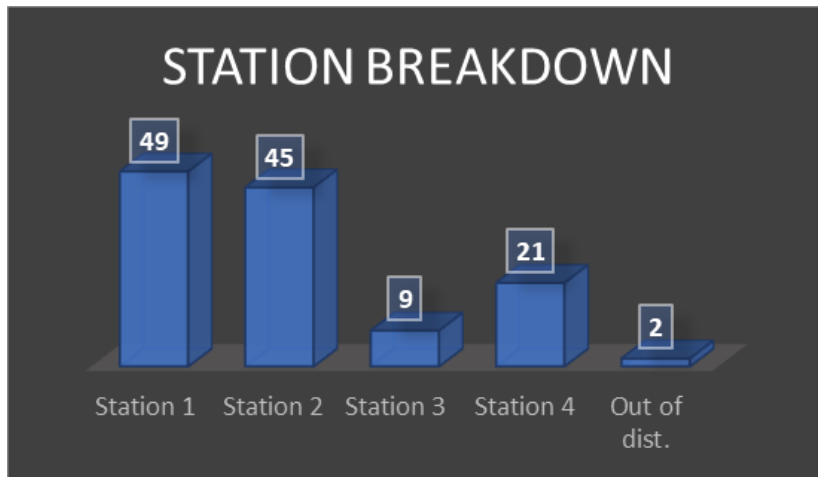
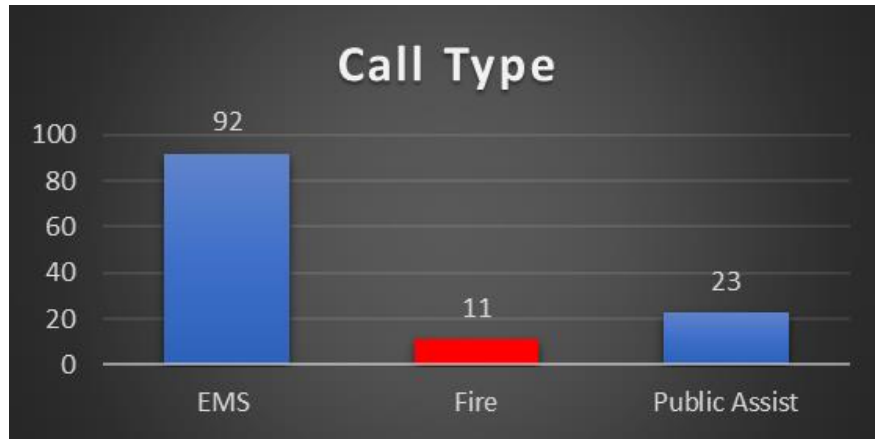
Operations Update

Annual Data

Calls by Month			
	2019	2020	2021
January	100	113	126
February	106	117	113
March	116	101	132
April	111	96	114
May	128	117	137
June	104	133	155
July	126	144	125
August	145	174	129
September	135	141	151
October	143	125	106
November	132	129	141
December	91	108	126
Total	1437	1498	1555
Monthly Average	120	125	173



December, 2021 Data



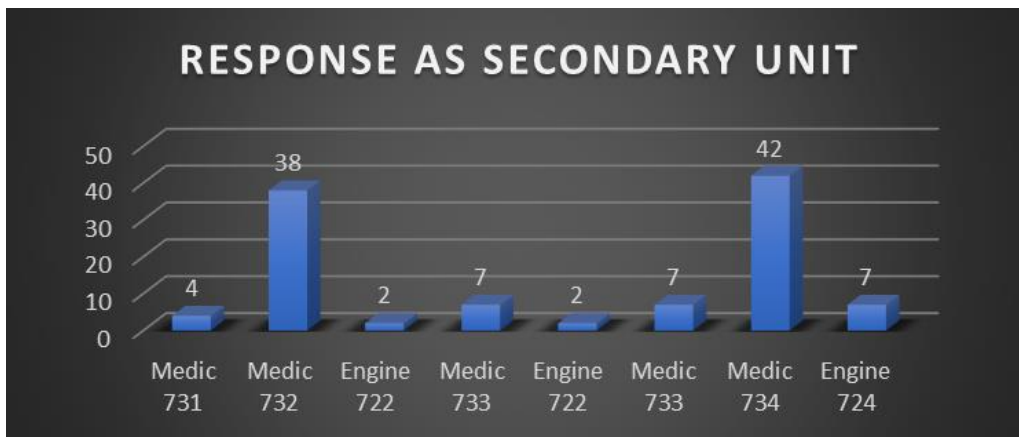
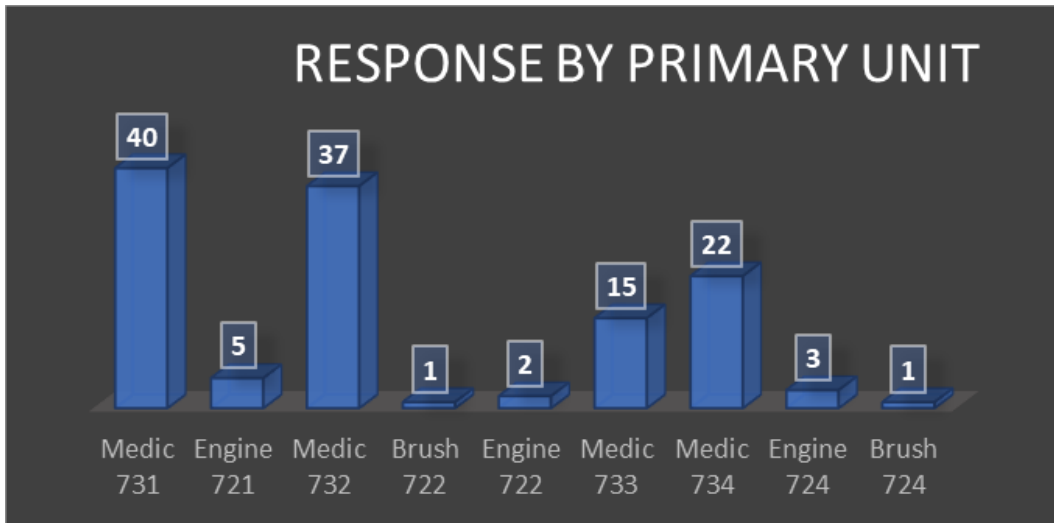
The above chart reflects unique incidents by station first due area, not total number of unit responses. For example, for a motor vehicle accident (MVA) that occurs in Station #1's primary response area, that is tracked as one unique incident with potentially more than one TFD unit responding to the call.

Station 1 – Average 53 unique incidents per month

Station 2 – Average 38 unique incidents per month

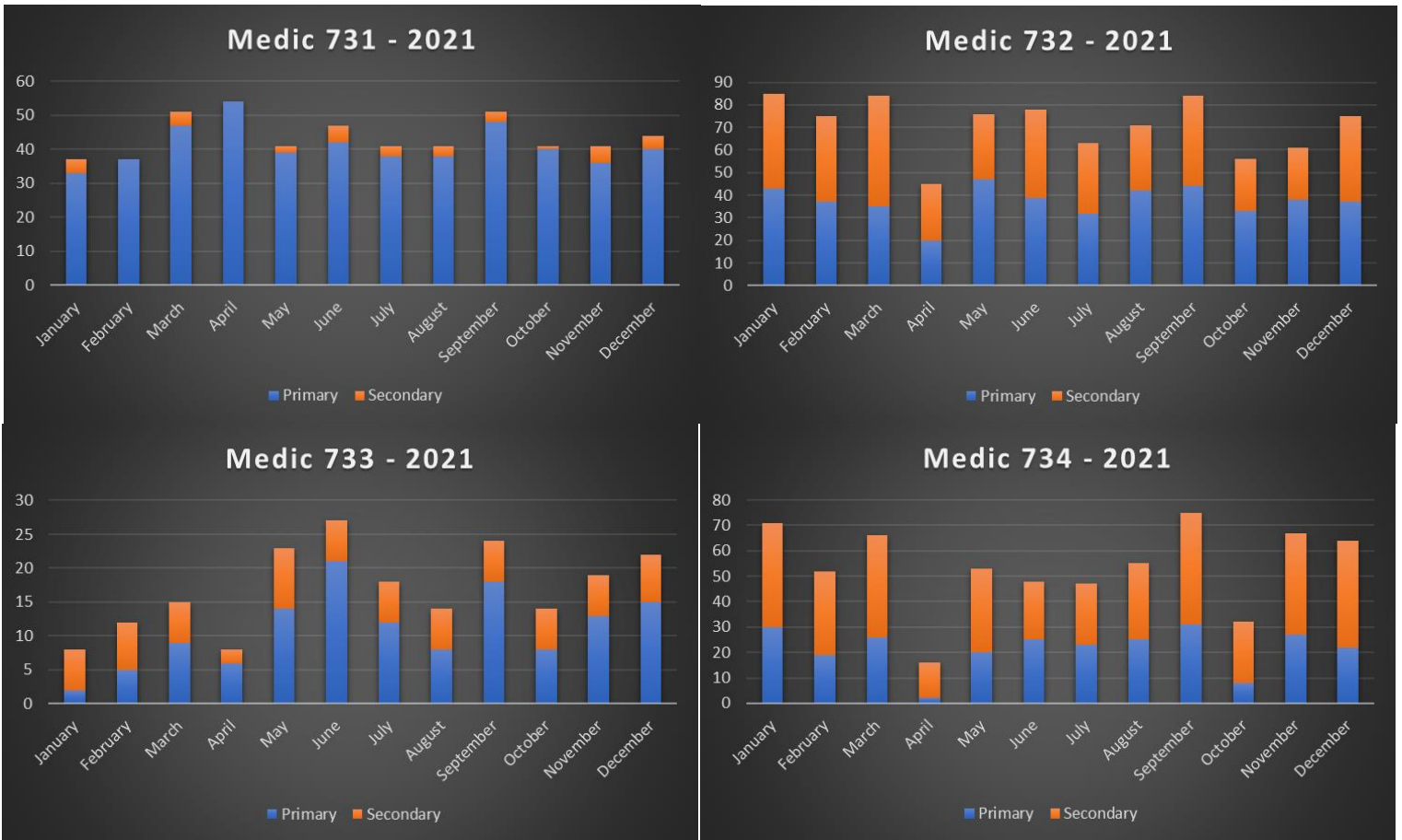
Station 3 – Average 12 unique incidents per month

Station 4 – Average 23 unique incidents per month



Annual Responses, Primary & Secondary Ambulance – 2021

2021 Unit Responses		
Unit	Primary	Secondary
Medic 731	492	34
Medic 732	447	406
Medic 733	131	73
Medic 734	258	388



These charts are for ambulance responses only for the primary and secondary units. We do not report on third and fourth units responding to an emergency call. Each station has additional responses each month on other apparatus (engine, brush truck, tender). This also does not include out of district responses for each station.

Response Goals Report



Monthly Total Response Goals Met Breakdown by Response Category

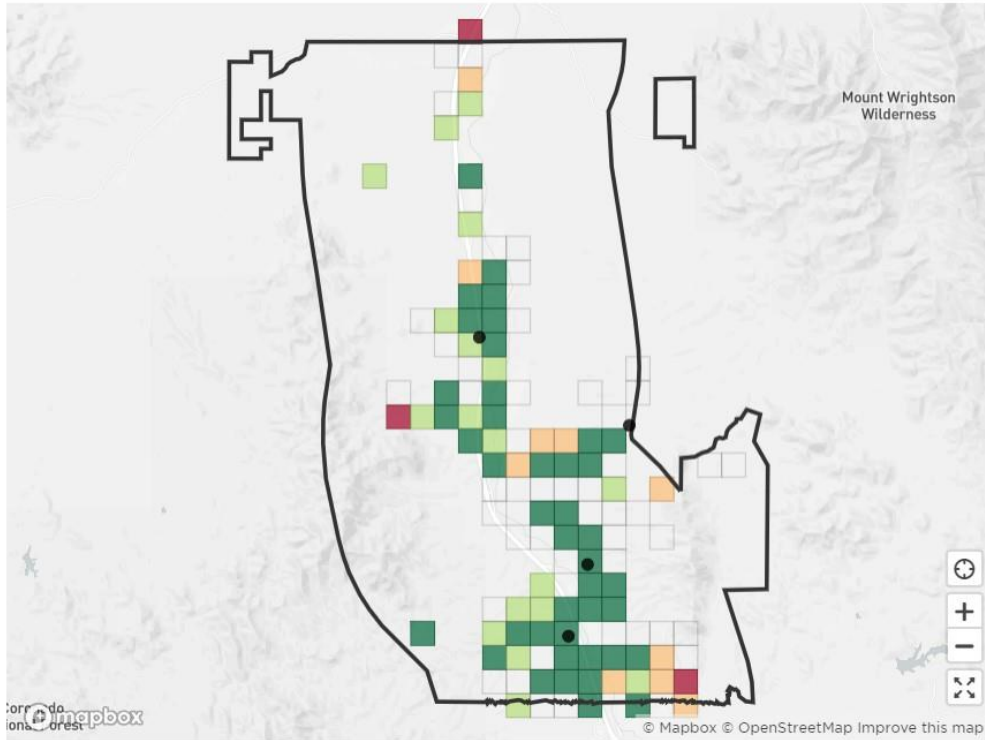


Tubac Fire District	% Goals Met
Turnout Time	89.09%
First Arriving Travel Time	74%
ERF Travel Time	85.71%
First Arriving Total Time	80.77%
ERF Total Time	100%

Response Goals

- Turnout Time = 2 minutes
- First Arrival Travel Time = 8 minutes
- ERF Travel Time = 10 minutes
- First Arrival Response Time = 10 minutes
- ERF Response Time = 12 minutes

Year-to-Date Total Response Goals Met by Planning Zone



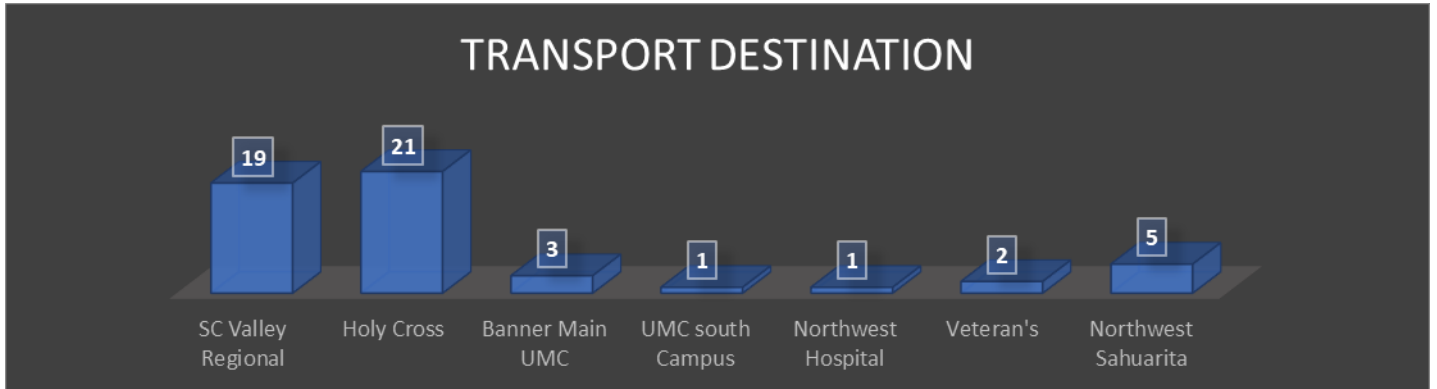
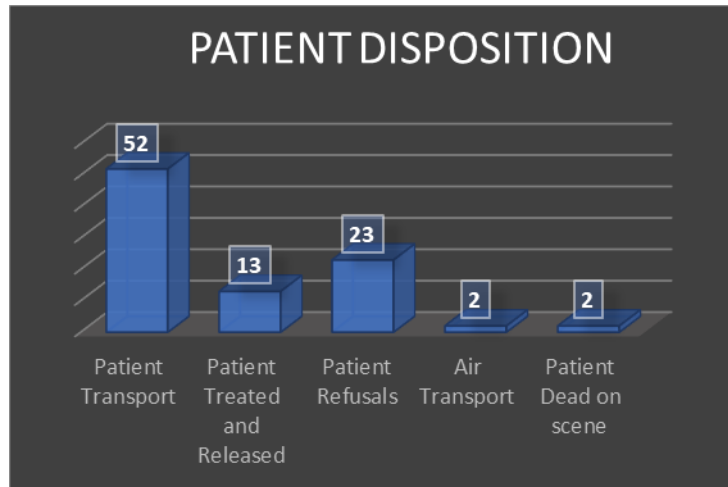
- Fire Stations
- Tubac Fire District

YTD Percent Goals Met

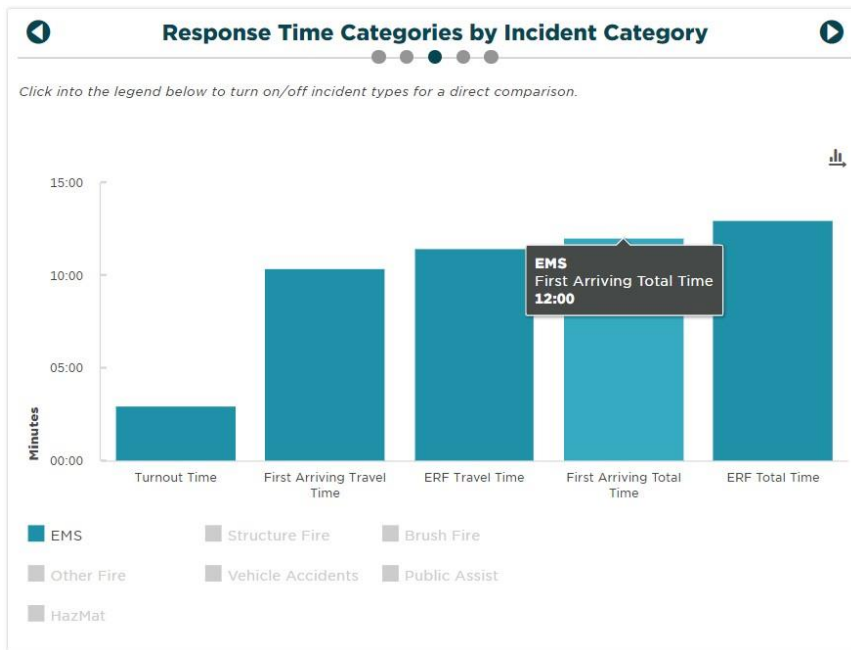
- 0% - 25%
- 25% - 50%
- 50% - 75%
- 75% - 100%

Emergency Medical Services Response

- ❖ Staff reviewed EMS 911 responses for the past month.



EMS Response Time



This chart indicates YTD response information for all EMS calls. TFD is responding to 90% of all EMS calls within 12:00 minutes, exceeding our response time requirements for the CON.

TFD CON Response Requirement per AZDHS:

- 50% within 8 minutes
- 70% within 15 minutes

Wildland Update

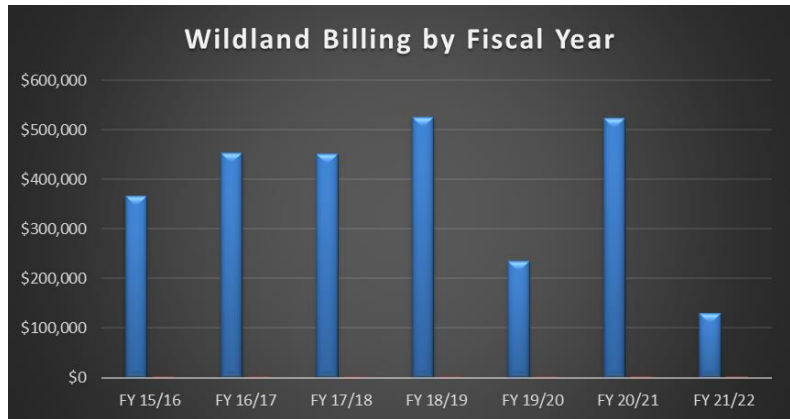
Updated 1/10/2022

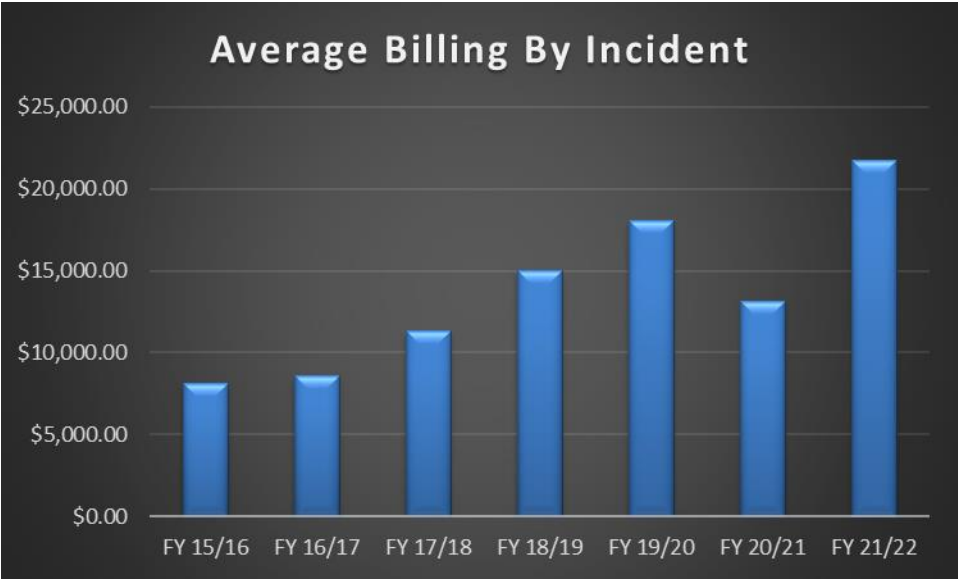
Tubac Fire District Out of District Wildland Response - FY 21/22						
Travel Per Diem	Equip Total	Payroll Total	Fire Total	Fire Date - Month	Location	Payment Amount Received
\$0.00	\$807.50	\$681.10	\$1,488.60	7/14/2021	Oakhurst, CA	\$1,488.60
\$7,088.75	\$18,445.00	\$20,609.81	\$46,143.56	7/14/2021	Oakhurst, CA	\$46,143.56
\$310.14	\$5,484.32	\$3,295.79	\$9,090.25	8/4/2021	Denton, MT	\$9,286.51
\$1,156.51	\$26,520.00	\$16,382.99	\$44,059.50	8/8/2021	St. Regis, MT	\$44,059.50
\$1,106.82	\$15,215.00	\$9,389.29	\$25,711.11	8/28/2021	Greenville, CA	\$25,711.11
\$53.97	\$2,337.50	\$1,262.94	\$3,654.41	10/10/2021	Pena Blanca Lake, AZ	\$3,654.41
\$9,716.19	\$68,809.32	\$51,621.92	\$130,147.43			\$130,343.69

*The Fire Total column does not include backfill for shift personnel

Out of District WL Incident Responses:

- ❖ FY 15/16 = 45
- ❖ FY 16/17 = 53
- ❖ FY 17/18 = 40
- ❖ FY 18/19 = 35
- ❖ FY 19/20 = 13
- ❖ FY 20/21 = 40
- ❖ FY 21/22 = 6





Administration Update

Prevention - Plan/Review

Updated 1/10/2022

Tubac Fire District Development Update				
Type	Description	Location	Progress	Date PD
Commercial	Church assembly	Santa Cruz County	Onsite Construction Inspections	
Commercial	Businesses near Station 2	Rio Rico	Conceptual Plan Review	
Commercial	Construction Canopy	Rio Rico	Permit Review	
Commercial	RV Resort Expansion	Amado	Under Construction	
Commercial	W. Frontage Rd. (Bemer)	Tumacacori	Under Construction	
Commercial (TI)	Tubac Rd	Tubac	Under Construction	PD \$100
Residential	Townhomes of Tubac	Tubac	Onsite Construction Inspections	not pd
Commercial	Store addition	Rio Rico	Construction Plan Review	not pd
Residential	Duplex New	Rio Rico	Construction Plan Review	not pd
Commercial	Pest Control (TI)	Amado	Construction Plan Review	not pd
Commercial	Rio Rico Self Storage (TI)	Rio Rico	Construction Plan Review	PD \$250
Residential	Cir Bautista (sprinkler)	Tubac	Construction Plan Review	PD \$150
Commercial	Outside Grow Area - 2935 frontage rd	Amado	Construction Plan Review	not pd
Residential	Townhomes of Tubac (Fire sprinklers)	Tubac	Under Construction	PD
Residential	Ave De Garza	Rio Rico	Under Construction	PD
Residential	Tierra Libre Ct	Tubac	Under Construction	PD \$150
Commercial	RRHS Ag Building	Rio Rico	Construction Plan Review	PD\$250
Commercial	RRHS lito Galindo New Building	Rio Rico	Construction Plan Review	PD\$250
Commercial	RRHS PAC building TI	Rio Rico	Construction Plan Review	PD\$250
Commercial	2721 E Frontage rd	Tubac	Construction Plan Review	not pd
Commercial	7 Ave Pastor	Rio Rico	Construction Plan Review	not pd
Residential	Lombard way 1301-1312	Tubac	Construction Plan Review	PD\$250
Residential	410 Camino Del Patio	Rio Rico	Permit Review	PD\$150
Residential	345 Camino Josephina	Rio Rico	Permit Review	PD \$150
Residential	2289 Circulo de Anza	Tubac	Permit Review	not paid
Commercial	1283-B W frontage Rd	Rio Rico	Construction Plan Review	PD \$250
Residential	433 Gorrion Ct.	Rio Rico	Construction Plan Review	PD\$150
Residential	736 Arnold Ct.	Rio Rico	Construction Plan Review	PD\$150
Residential	541 Valdez ct	Rio Rico	Construction Plan Review	PD\$150
Residential	41 Charro Ct	Rio Rico	Construction Plan Review	PD\$150
Residential	30 Tierra Libre Ct	Tubac	Construction Plan Review	not pd
Residential	1501 Golden Gateway	Tubac	Construction Plan Review	PD\$150
Commercial	2731 E Frontage Rd	Amado	Construction Plan Review	not pd
Residential	463 Via Lechuza	Rio Rico	Construction Plan Review	PD\$150
Residential	481 Villa Barra	Rio Rico	Construction Plan Review	PD\$150
Residential	546 Valdez ct.	Rio Rico	Permit Review	
Residential	1221 camino Gilberto	Rio Rico	Permit Review	PD\$150
Commercial	2221 E Frontage h101,102,103	Tubac	Construction Plan Review	PD \$100
Event Permit Request	Tubac golf Resort wedding	Tubac	Permit Review	
Event Permit Request	Tubac Golf Resort New Year	Tubac	Permit Review	
Residential	34 Cir Bautista	Tubac	Permit Review	
Commercial	2221 E Frontage	Tubac	Construction Plan Review	PD \$150