

PROJECT:

TUBAC  
FIRE STATION 1  
2227 EAST FRONTAGE ROAD  
TUBAC, ARIZONA

PHASE:

COMMITTEE  
REMODEL  
CONCEPTUAL  
OPTIONS

REVISIONS:

▲	_____
▲	_____
▲	_____
▲	_____
▲	_____
▲	_____

PROJECT NO.: 18-025

DRAWN: PDM

CHECKED: PDM

DATE: MAY 11 2020

PLOT DATE: 5/11/2020 3:33:20 PM

SHEET TITLE:

CONCEPT PLAN  
OPTION B

1/8"=1'-0"

SHEET NO.: . . . . .

. . . . .

. . . . .

. . . . .

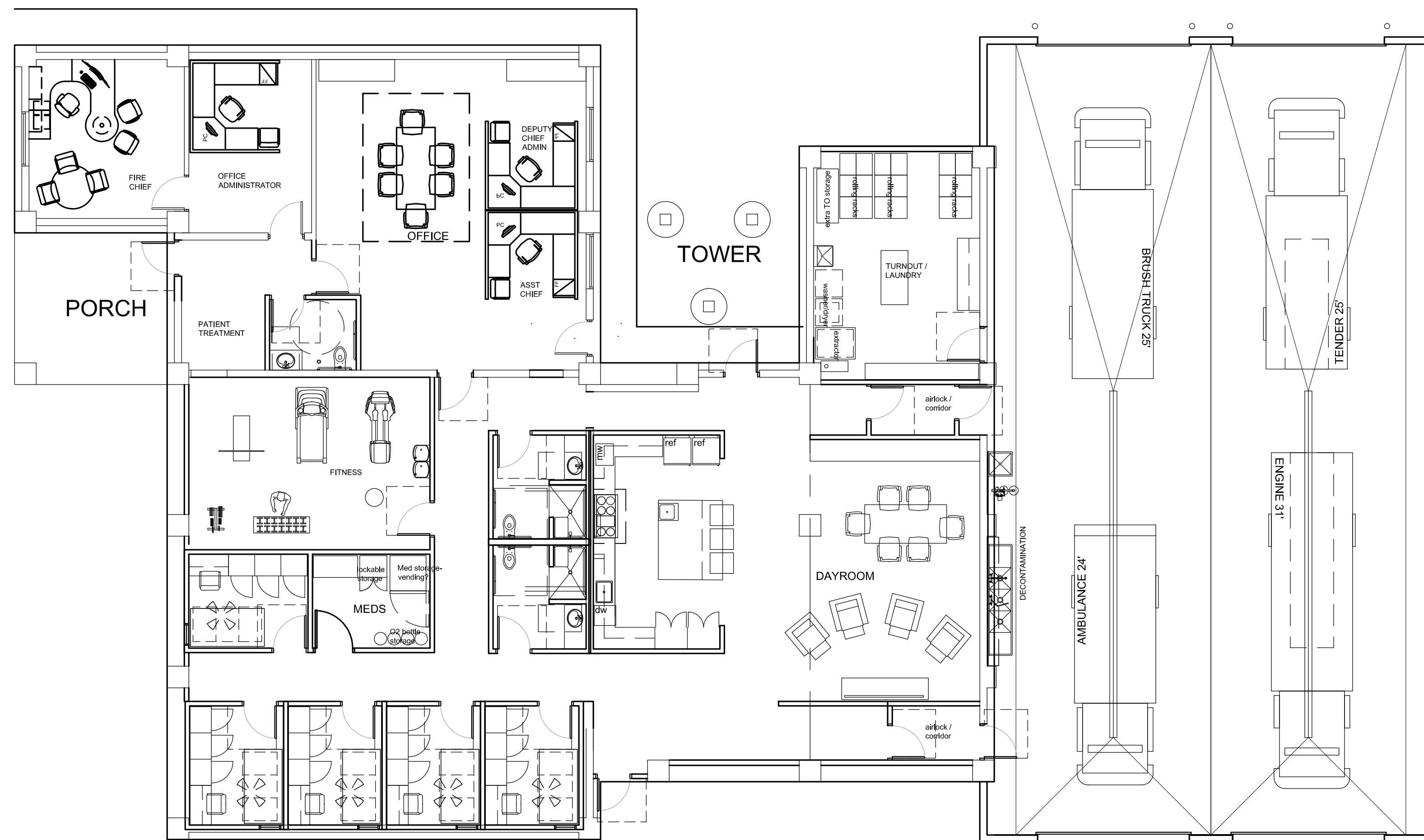
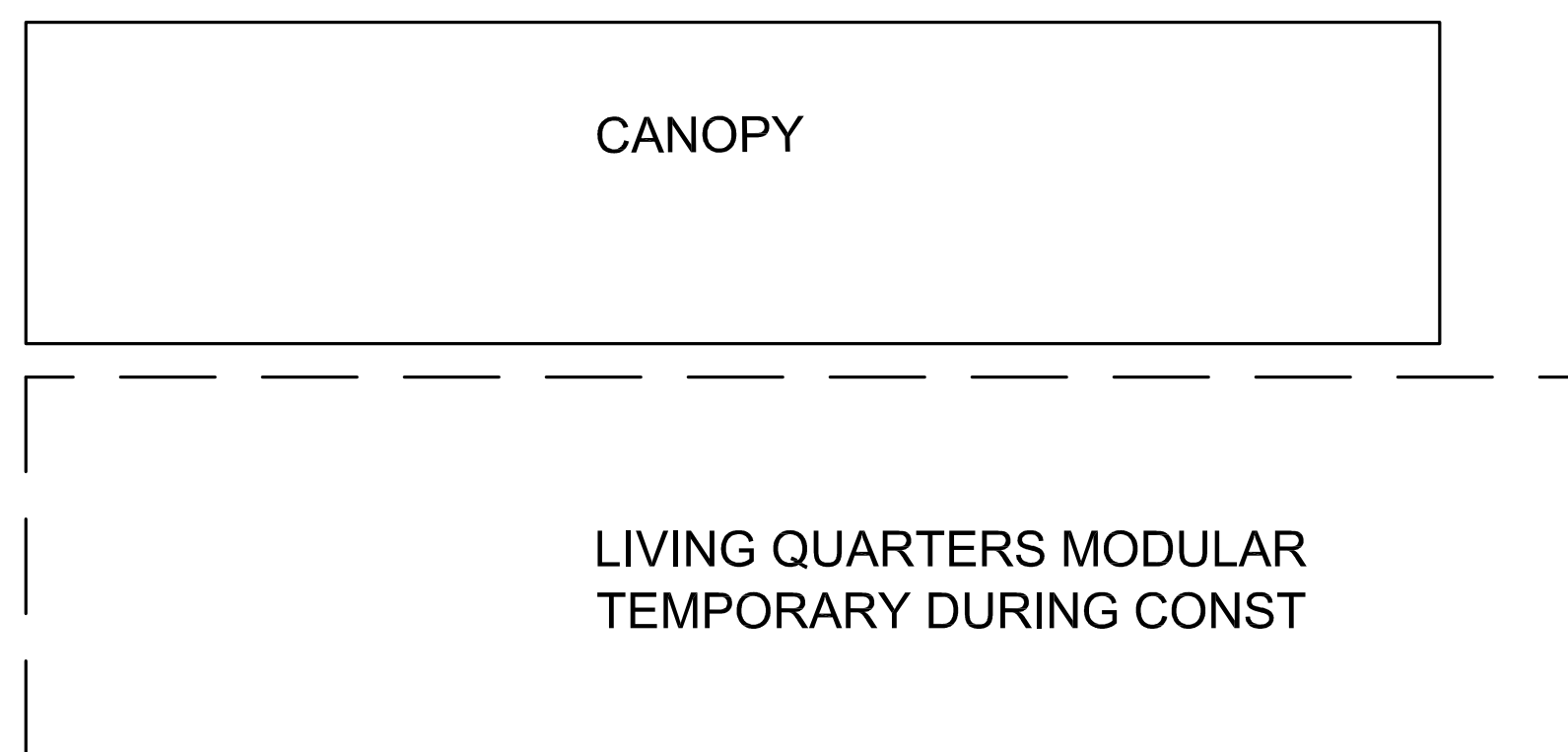
. . . . .

**B**

210.82'

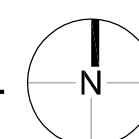
223.97'

248.10'



NEW APPARATUS BAYS = 3122 SF

**OPTION B**  
EXIST BUILDING = 4,942 GSF  
ADMIN AREA = 1,448 SF  
FIRE STATION REMODEL AREA = 3,394 SF



GAS